

17km of trails lead into the park. The best for birdwatching are Junction Track, Pyramid Trail, Granite Arch Circuit and Castle Rock Sphinx Trail with Junction Track, which follows Bald Rock Creek, the pick of these. *Brown Quail, Shining Bronze Cuckoo*, Brush Cuckoo, Australian Owllet-nightjar, Painted Buttonquail, Little Eagle, Collared Sparrowhawk, Glossy Black Cockatoo, Turquoise Parrot, Superb Lyrebird, Satin Bowerbird, Red-browed Treecreeper, Purple-backed Fairywren, Lewin's Honeyeater, Yellow-tufted Honeyeater, New Holland Honeyeater, Chestnut-rumped Heathwren, Large-billed Scrubwren, Inland Thornbill, Spotted Quail-thrush, Australian Rufous Fantail*, Scarlet Robin**.

33. Girraween National Park - Dr Roberts Waterhole & P Underground Creek

Pyramids Rd, Wyberba -28.828046, 151.973768

4.7km along Pyramids Rd from the Visitor Centre are trails to Dr Roberts waterhole and underground creek. This area is swampland communities and low areas of alpine banksia shrub. The trails are flat. The waterhole is a wonderful reed-fringed pool where birds regularly come to drink. *Wonga Pigeon, Shining Bronze Cuckoo*, Wedge-tailed Eagle, Superb Lyrebird, Red-browed Treecreeper, Purple-backed Fairywren, White-plumed Honeyeater, White-throated Honeyeater, White-naped Honeyeater, Spotted Pardalote, Weebill, Spotted Quail-thrush, Eastern Whipbird, Eastern Shrikeitit, Leaden Flycatcher*, Restless Flycatcher*, Varied Sittella, Eastern Yellow Robin, Rose Robin*, Scarlet Robin*, Mistletoebird, Diamond Firetail.*

34. Girraween National Park – Mt Norman Day Use Area


Mount Norman Rd, Wallangarra -28.877616, 151.968524 

This part of Girraween National Park is accessed via Wallangarra using Mount Norman Rd. The day use area is 8km from Wallangarra. From the day use area the road is 4WD only. This area is practically on the watershed of the Great Dividing Range and the habitat is much wetter. It is an excellent spot to observe or at least hear Superb Lyrebirds. *Australian Brushturkey, Brown Quail, Common Bronzewing, Wonga Pigeon, Satin Bowerbird, Red-browed Treecreeper, Brown Treecreeper, Yellow-tufted Honeyeater, New Holland Honeyeater, White-eared Honeyeater, White-throated Honeyeater, Chestnut-rumped Heathwren, Spotted Quail-thrush, White-winged Triller, Varied Sittella, Eastern Shrikeitit, Australian Rufous Fantail*, Scarlet Robin*, Mistletoebird.*

35. Wallangarra Wastewater Treatment Plant

Cnr Bald Mountain Rd and Hines Rd -28.91202, 151.923604

A great spot on the outskirts of Wallangarra to see many of the local waterbirds and occasional rarities. There is a pull off spot beside the Treatment Plant. The ponds can be viewed through the fence. The surrounding bushland contains a broad range of local bush birds. *Maggie Goose, Plumed Whistling Duck, Australasian Shoveler, Chestnut Teal, Pink-eared Duck, Hardhead, Brown Quail, Hoary-headed Grebe, Peaceful Dove, Bar-shouldered Dove, Pacific Koel*, Channel-billed Cuckoo*, Brush Cuckoo, Dusky Moorhen, Eurasian Coot, Australasian Swamphen, Plumed Egret, Royal Spoonbill, Little Eagle, Azure Kingfisher, Sacred Kingfisher*, Australian Hobby, Turquoise Parrot, Brown Treecreeper, Yellow-tufted Honeyeater, Fuscous Honeyeater, Eastern Shrikeitit, Little Woodswallow, Australian Reed Warbler, Little Grassbird, Chestnut-breasted Mannikin.*

 Don't forget to always carry water, use insect repellent, wear sunscreen and protective clothing. If birding alone let someone know where you are going and the expected return time.

Common Southern Downs Birds

These birds are often observed in the Southern Downs area and are not included in the individual site descriptions.

Grey Teal, Maned Duck, Pacific Black Duck, Masked Lapwing, Rock Dove, Spotted Dove, Crested Pigeon, Straw-necked Ibis, Laughing Kookaburra, Galah, Sulphur-crested Cockatoo, Rainbow Lorikeet, Brown Honeyeater, Noisy Friarbird, Noisy Miner, Striated Pardalote*, Australian Magpie, Grey Butcherbird, Pied Butcherbird, Black-faced Cuckooshrike, Superb Fairywren, Yellow-rumped Thornbill, Australasian Figbird, Willie Wagtail, Magpie-lark, Torresian Crow, Welcome Swallow.

Site Information

Site Notes: Descriptions provide location addresses, and a list of interesting species one can see at the site depending on the time of year. Species lists were compiled using data from eBird.org and cross-checked by local birders. They broadly follow the taxonomic ordering system as per IOC v 14.1. Many Australian birds are migratory or nomadic to a greater or lesser extent. The more long-distance migrants or nomadic species that do not generally breed in the region are marked with an * and can be seen on a seasonal basis. Off-road parking may include a designated car parking area or the availability of off roadside verge parking. Care should be taken when parking on verges adjacent to busy roads.



Sites with mobility impaired vary in terms of which sections are accessible. In general, meeting points and picnic areas are what is meant by accessible. Some parks have paved or concrete paths, however this is rare.

CONTRIBUTING ORGANISATIONS

Birdlife Southern Queensland www.birdlife.org.au

Birds Queensland www.birdsqueensland.org.au

Granite Belt Sustainable Action Network www.gbsan.org.au

Southern Downs Regional Council www.sdrc.qld.gov.au

This project has been assisted by Grants to Community funding from the Southern Downs Regional Council.

Please upload your lists to an online bird sighting database to aid in conservation and management of Australia's native birds. Depending on your methods please visit either: www.birddata.birdlife.org.au/ or www.ebird.org

GENERAL BIRDWATCHING TIPS

Go birdwatching early when most birds are active: about an hour after sunrise, or when the sun reaches the vegetation at the site, is often a good time. Waterbirds are usually still present later, but on larger wetlands, the rising sun later in the morning can cause glare that affects visibility.

Look everywhere: on branches, in foliage, among flowers, on the tree trunks, in the long grass, and also on the banks and in the reedy areas at the edge of wetlands and rivers; look for trees with hollow branches that may be nesting sites.

Listening is as important as looking: Listen for bird calls and look in the direction of the sound. Each bird has distinctive calls, it is useful to get to know the calls.

Resources: use binoculars and have a good field guide available. A mobile phone app with bird calls is also useful. See contacts for the birding organizations, at the end of this brochure, for further information about birdwatching resources.

Bird Places of the Southern Downs

Where to find birds on the Southern Downs



Photographs: Girraween National Park-Tourism Queensland, Crimson Rosella, Yellow-tufted Honeyeater and Turquoise Parrot-Charles Dove



Warwick Area Sites

1. Leslie Dam – Rocklands Reserve

942 Rockland Rd, Leslie Dam -28.271627, 151.855351

Rockland Reserve is a small reserve bordering Sandy Creek where it runs into Lake Leslie (Leslie Dam). The best park is where the road bends just after crossing Sandy Creek. A few trails run through the open eucalyptus bushland to the creek. A good mix of habitats provides a great diversity of birds. *Black Swan, Great Crested Grebe, Pied Stilt, Black-fronted Dotterel, Royal Spoonbill, Whistling Kite, Sacred Kingfisher*, Cockatiel, Long-billed Corella, Red-rumped Parrot, Brown-headed Honeyeater, Spotted Pardalote, Grey-crowned Babbler, Restless Flycatcher*, Fairy Martin, Mistletoebird, Australian Pipit.*

2. Leslie Dam – Washpool Camping Reserve

Washpool Rd, Leslie Dam -28.240361, 151.917121

A popular camping area run by SDRC on Lake Leslie. The area is open Eucalypt woodland. Several informal tracks (slashed grass, or uneven gravel) provide the means to explore the mixture of grassy areas along with the riparian and lake habitats. *Pink-eared Duck, Australasian Shoveler, Blue-billed Duck, Musk Duck, Comb-crested Jacana, Hoary-headed Grebe, Pheasant Coucal, Latham's Snipe*, Plumed Egret, Glossy Ibis, Black-shouldered Kite, Sacred Kingfisher*, Glossy Black Cockatoo, Red-winged Parrot*, Musk Lorikeet, White-throated Treecreeper, Variegated Fairywren, Striped Honeyeater, Speckled Warbler, White-browed Scrubwren, Rufous Whistler, Leaden Flycatcher*, Golden-headed Cisticola, Red-browed Finch, Australian Zebra Finch, Singing Bush Lark.*

3. Queens Park River Walk

Alice Street, Warwick -28.208512, 152.035068

A walk that runs along the Condamine River in Warwick. The walk is generally level with a mix of Eucalyptus trees and mown areas. The riverbanks have some good reedy habitat. It is easily accessed and good for common waterbirds, occasional unusual species, and riverine raptors. *Mallard, Australasian Grebe, Brown Cuckoo-Dove, Pacific Koel*, Tawny Frogmouth, Australasian Swamphen, Australasian Darter, Great Egret, Plumed Egret, Grey Goshawk, Azure Kingfisher, Oriental Dollarbird*, Cockatiel, Australian King Parrot, Eastern Rosella, Musk Lorikeet, Blue-faced Honeyeater, Australian Raven, Australian Reed Warbler.*

4. Morgan Park Resources Reserve

Old Stanthorpe Rd, Warwick -28.257956, 152.04944

A large reserve at the back of the Morgan Park motor racing and horse-riding precinct. The site is accessed through the main entrance to Morgan Park on Old Stanthorpe Rd. Follow the tarmac road in curving left for about 900m and when the road bends right (-28.266299, 152.038845) there is ample space to park on the grassy verges. The best birdwatching is had by walking the tracks that run through the reserve on the left. The habitat "mostly dry eucalyptus forest" offers good views of a diverse range of birds. There are no facilities at the site. *Brown Quail, Pacific Koel*, Pacific Baza, Black Kite, Scaly-breasted Lorikeet, Yellow-faced Honeyeater, Brown-headed Honeyeater, Striped Honeyeater, Speckled Warbler, White-winged Triller, Rufous Whistler, Grey Shrike-thrush, Olive-backed Oriole, Leaden Flycatcher*, White-winged Chough, Jacky Winter, Mistletoebird, Diamond Firetail, Double-barred Finch.*

5. Rosenthal Heights Reserve (Everest Rd Flora & Fauna Reserve)

Westview Rd, Warwick -28.235795, 151.98936

This is a small very diverse suburban reserve in Warwick. Access is at the

end of Westview Rd. Multiple walking routes through this reserve provide ample opportunity to view many species in the dry Eucalypt forest habitat. It is a small reserve but the range of species is extraordinary. *Plumed Whistling Duck, Bar-shouldered Dove, Square-tailed Kite, Wedge-tailed Eagle, Nankeen Kestrel, Brown Falcon, Red-winged Parrot*, Musk Lorikeet, Satin Bowerbird, Purple-backed Fairywren, Brown-headed Honeyeater, Spiny-cheeked Honeyeater, Striped Honeyeater, Blue-faced Honeyeater, Speckled Warbler, Weebill, White-browed Scrubwren, Grey-crowned Babbler, White-winged Triller, Varied Sittella, Australian Golden Whistler, Rose Robin*, Jacky Winter, Silvereye, Mistletoebird, Red-browed Finch, Diamond Firetail, Australian Zebra Finch.*

6. Wentworth Street Dam

Cnr Wentworth Street and Doy Street -28.201665, 152.006707

A roadside birding spot, so caution is required, the road is gravel with little traffic. It is easy to park on the side of the road. The Dam, which can be viewed from the road, hosts a wide range of waterbirds with occasional rarities. The edges of the dam are good for riparian species. *Magpie Goose, Black Swan, Australasian Shoveler, Pink-eared Duck, Hardhead, Hoary-headed Grebe, Channel-billed Cuckoo*, Buff-banded Rail, White-bellied Sea Eagle, Cockatiel, Red-rumped Parrot, White-plumed Honeyeater, Golden-headed Cisticola, Australian Reed Warbler, Brown Songlark, Plum-headed Finch.*

7. Lyndhurst Rd Dam

East end of Lakeview Avenue -28.20857, 151.99102

This Dam in a suburban setting in Warwick is best viewed from Lakeview Ave. There is some riparian vegetation along with extensive open grassland and eucalypts which offer easy birding. The dam boasts a range of waterbirds with occasional unusual visitors. It hosts an island in the centre which is great for breeding waterbirds. Muddy verges can be viewed closest to the estate and to the main highway. *Chestnut Teal, Hardhead, Australasian Grebe, Hoary-headed Grebe, Great Crested Grebe, Latham's Snipe*, Australasian Darter, Whistling Kite, Osprey, Nankeen Kestrel, White-bellied Sea Eagle, Sacred Kingfisher*, Oriental Dollarbird*, Cockatiel, Red-winged Parrot*, Red-rumped Parrot, Musk Lorikeet, Grey Shrike-thrush, Singing Bush Lark, Tawny Grassbird, Australian Zebra Finch.*

8. Connolly Dam

Connolly Dam Rd, Warwick District -28.357685, 152.002676

Connolly Dam is adjacent to the SDRC Council run Camping Ground. As such a full range of facilities are available to birdwatchers. Connolly Dam has good coverage of aquatic plants along its shallow edges. Trails around the Dam are suitable for bushwalking. Note the Connolly Dam Rd and all access roads are gravel. *Plumed Whistling Duck, Musk Duck, Brown Quail, Australasian Grebe, Hoary-headed Grebe, Pheasant Coucal, Pacific Koel*, Channel-billed Cuckoo*, Comb-crested Jacana, Latham's Snipe*, Caspian Tern, Spotted Harrier, Australian Boobook, Oriental Dollarbird*, Brown Falcon, Scarlet Myzomela, Grey-crowned Babbler, Common Cicadabird, White-winged Chough, Rufous Songlark.*

Sites of Western Southern Downs

9. Durikai State Forest

Cunningham Highway, 45km west of Warwick.

Durikai State Forest is extensive and diverse Eucalypt open forest woodland with small dams and waterholes 45km west of Warwick. It is part of the Durikai – Traprock Key Biodiversity Area and is an important area for the Regent Honeyeater and Diamond Firetail. The forest is excellent for birdwatching and many uncommon birds have been seen here. Best sites:-

9.1 Waterhole

-28.195391, 151.611258

This famous birdwatching spot, especially for honeyeaters, is about 600 meters past the Durikai Rd intersection on the south side of the Cunningham Highway. There is ample offroad parking here and the highlight is watching birds coming in and drinking at the waterhole. The waterhole is located a short walking distance south of the Highway. *Squatter Pigeon, Brown Falcon, Turquoise Parrot, Brown Treecreeper, Purple-backed Fairywren, Lewin's Honeyeater, Yellow-faced Honeyeater, Yellow-tufted Honeyeater, Spiny-cheeked Honeyeater, White-plumed Honeyeater, Fuscous Honeyeater, Scarlet Myzomela, White-cheeked Honeyeater, White-eared Honeyeater, White-naped Honeyeater, Brown-headed Honeyeater, Black-chinned Honeyeater, Striped Honeyeater, Spotted Pardalote, Speckled Warbler, White-browed Babbler, Eastern Shrike-thrush, Masked Woodswallow, White-browed Woodswallow, Rose Robin*.*

9.2 East Branch Reedy Creek

-28.171885, 151.657163

This other easily accessible spot in Durikai State Forest is on the south side of the Cunningham Highway about 4.8 km before site 9.1. The creek and lagoons are a short walking distance from the Highway. A range of tracks lead from here into the forest. The species here are similar to that at the site 9.1.

10. Cunningham Rest Stop

Cunningham Highway, 32.4km west of Warwick -28.169475, 151.731932

The Cunningham truck rest stop is just before Thane. There are wide pull-offs on both sides of the road. The south side is the best access to light Eucalypt woodland habitat with a small dam further off to the south. This has a good range of birds. *Squatter Pigeon, Australian Boobook, Oriental Dollarbird*, Little Corella, Pale-headed Rosella, Grey-crowned Babbler, Olive-backed Oriole, Apostlebird, Pied Currawong, Australian Raven.*

11. Glendon Camping Ground

Glendon Rd, off Cunningham Highway -28.175052, 151.7096

Glendon Camping Ground welcomes day visitors as well as campers. It has a wonderful selection of birds and is a great place to base yourself to explore Durikai Forest. Take the Cunningham Highway west from Warwick and at Glendon Rd (-28.161404, 151.687733) turn south following the signs. The camping ground is in a lightly forested area on the banks of Thane Creek. It has bushwalking trails where a good range of bush birds can be seen. *Squatter Pigeon, Tawny Frogmouth, Nankeen Night Heron, White-faced Heron, Australian White Ibis, Australian Boobook, Brown Falcon, Australian King Parrot, Little Lorikeet, White-plumed Honeyeater, Little Friarbird, Spotted Pardalote, Striated Thornbill, Speckled Warbler, Varied Sittella, Eastern Yellow Robin, Grey Shrike-thrush, Olive-backed Oriole, Leaden Flycatcher*.*

12. Karara Showgrounds

Karara School Rd, Karara -28.204227, 151.563594

Karara is further west from Durikai State Forest. Camping is available at the Showgrounds. This birdwatching location has many of the more western species. Also a great spot for a bit of owling. *Squatter Pigeon, Tawny Frogmouth, Eastern Barn Owl, Australian Boobook, Nankeen Kestrel, Little Corella, Australian King Parrot, Swift Parrot*, Pale-headed Rosella, Budgerigar*, Musk Lorikeet, Regent Honeyeater*, Black-chinned Honeyeater, Spotted Pardalote, Weebill, White-browed Babbler, Inland Thornbill, Eastern Shrike-thrush, Yellow-throated Miner, White-browed Woodswallow, Masked Woodswallow.*

13. Allora Mountain Flora & Fauna Reserve

Burges Rd, Allora -28.02804, 151.988861

This 210 hectare reserve on the outskirts of Allora is accessed via Burges Rd off the New England Highway. The Allora Landcare Group have produced a pictorial guide to the birds of the reserve. Well-maintained trails run through the reserve and the birdwatching, particularly the range of cuckoos, is excellent. The habitat is made up of a mixture of eucalyptus communities with creeks nearby. *Brown Quail, Bar-shouldered Dove, Pheasant Coucal, Pacific Koel*, Shining Bronze Cuckoo*, Little Bronze Cuckoo, Fan-tailed Cuckoo*, Brush Cuckoo, Rainbow Bee-eater*, Pacific Baza, Black Falcon*, Eastern Blue-bonnet*, Purple-backed Fairywren, Red-backed Fairywren, Western Gerygone, White-bellied Cuckooshrike, White-winged Triller*, Varied Sittella, Restless Flycatcher*, Rose Robin*, Australian Zebra Finch, Double-barred Finch.*

Sites of North-Eastern Southern Downs

MAIN RANGE AND SCENIC RIM

Main Range National Park forms an arc from Killarney in the east to Goomburra in the north-west, with Cunninghams Gap in the middle. It is a Key Biodiversity Area. The National park is vast and set out below are some of the best and most accessible parts for birdwatching.

KILLARNEY FALLS LOOP

14. Browns Falls

143 Spring Creek Rd, Killarney -28.353583, 152.345629

Browns Falls is a 15m waterfall 4.5 kms from Killarney. It is a 600m rock hop walk along the creek through eucalypts and rainforest but worth it. If you want to avoid the hike, birds can be seen easily from the main picnic ground. There is no wheelchair accessibility beyond that point. *Topknot Pigeon, Wonga Pigeon, Brown Cuckoo-Dove, Wedge-tailed Eagle, Satin Bowerbird, Paradise Riflebird, Australian King Parrot, Eastern Spinebill, Lewin's Honeyeater, Eastern Whipbird, Spangled Drongo, Spotted Pardalote.*

15. Daggs Falls Park & Lookout

Daggs Falls Lookout, Spring Creek Rd, Killarney -28.346518, 152.345322

Further along Spring Creek Rd, Daggs Falls is on a creek descending from the McPherson Range through a lush rainforest gorge. The viewing platform off Spring Creek Rd is a perfect vantage point to spot raptors. *Topknot Pigeon, Brown Cuckoo-Dove, Wedge-tailed Eagle, Grey Goshawk, Australian King Parrot, Yellow-faced Honeyeater, Bell Miner, Varied Sittella, Spotted Pardalote, Eastern Yellow Robin, Spangled Drongo.*

16. Queen Mary Falls

Spring Creek Rd, The Falls -28.341853, 152.37144

The most spectacular falls on Spring Creek Rd. Stroll through changing forests from the top of the falls, down to the base via either the Queen Mary Falls or the Cliff circuits. From the picnic area head along a eucalypt-topped ridge line to the cool, lush, rain forested gorge. Many of the colourful rain-forest birds come down in numbers at the Cafe located across the Rd from the picnic grounds. *Topknot Pigeon, Wonga Pigeon, White-headed Pigeon, Common Bronzewing, Bar-shouldered Dove, Crimson Rosella, Australian King Parrot, Satin Bowerbird, Bell Miner, Eastern Whipbird, Yellow-throated Scrub-wren, Red-browed Treecreeper, Pied Currawong, Eastern Yellow Robin, Pale-yellow Robin.*

17. Carr's Lookout

Carr's Lookout, Spring Creek Rd, The Falls -28.293186,

Sites of Central Southern Downs

21. Donnelly's Castle and Lookout

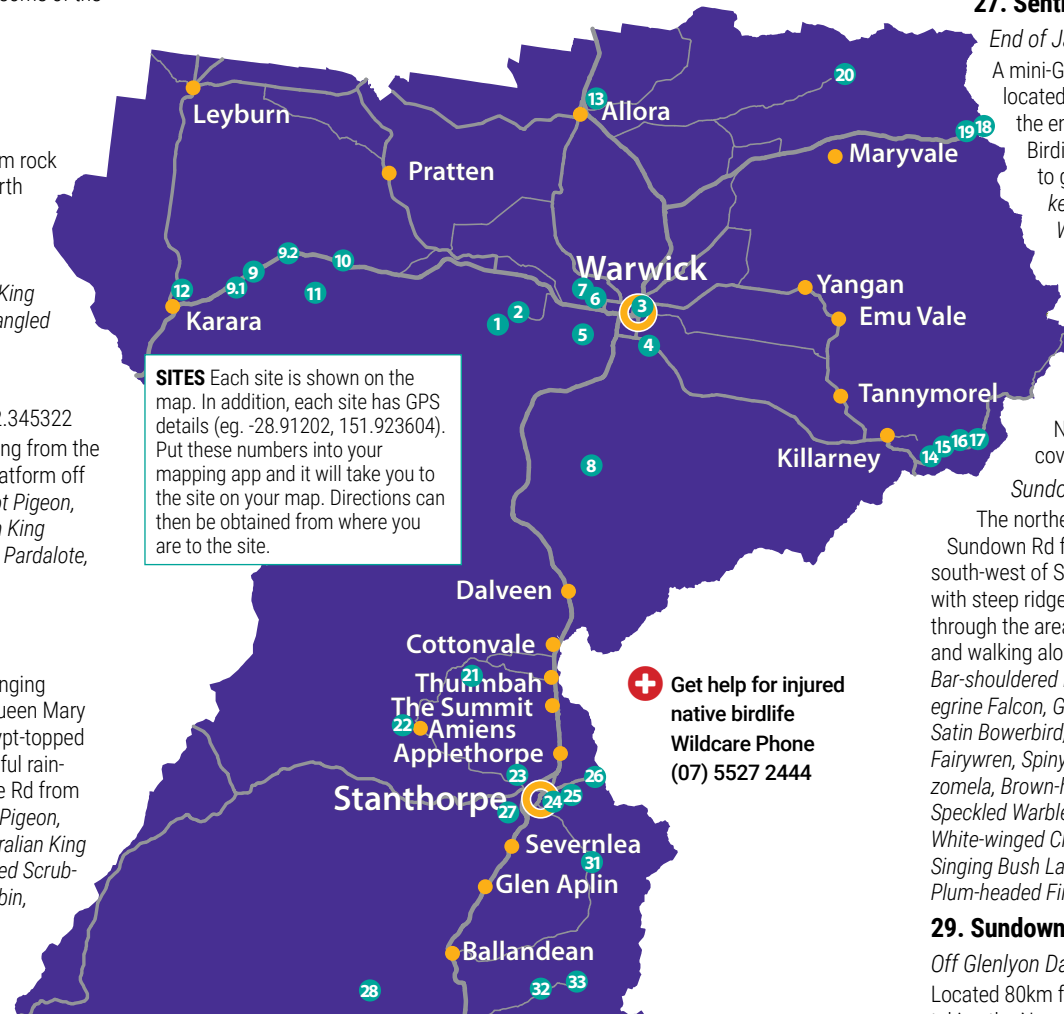
Donnelly's Castle Rd, Pozieres -28.561624, 151.881402

Where the bushranger "Thunderbolt" had his home. A spectacular granite formation home to numerous bird species. An excellent spot for kids with picnic facilities and toilets. It is good for bush birds with eucalyptus open forest with varying amounts of understorey and mid-storey vegetation. *Wonga Pigeon, Channel-billed Cuckoo*, Oriental Dollarbird*, Crimson Rosella, Australian King Parrot, White-throated Treecreeper, Bell Miner, Yellow-faced Honeyeater, Red Wattlebird, White-eared Honeyeater, White-throated Honeyeater, Spotted Pardalote, Speckled Warbler, White-browed Scrubwren, Striated Thornbill, Buff-rumped Thornbill, White-throated Gerygone, Common Cicadabird, Varied Sittella, Australian Golden Whistler, Leaden Flycatcher*, Rose Robin*, Mistletoebird.*

22. Foxbar Falls (Restricted Access, campers only)

375 Goldfields Rd, Amiens -28.570739, 151.771892

This private camping ground also welcomes pre-organised groups of bird-watchers. The area is a high biodiversity site for both flora and fauna. The



SITES Each site is shown on the map. In addition, each site has GPS details (eg. -28.91202, 151.923604). Put these numbers into your mapping app and it will take you to the site on your map. Directions can then be obtained from where you are to the site.

Get help for injured native birdlife
Wildcare Phone
(07) 5527 2444

riparian reed vegetation. The creek is a permanent water source which can attract unusual species and often the Azure Kingfisher. *Black Swan, Pacific Koel*, Dusky Moorhen, Eurasian Coot, Australasian Swamphe, Little Pied Cormorant, Australian White Ibis, Australian Hobby, Crimson Rosella, Variegated Fairywren, White-cheeked Honeyeater, White-eared Honeyeater, Blue-faced Honeyeater, White-winged Triller, Australian Golden Whistler, Rufous Whistler.*

26. Mt Marlay Lookout & Summit Loop

Lock Street – Mount Marlay Access -28.653762, 151.946167

The highest point in Stanthorpe with panoramic views over the surrounding countryside. Drive to the top or take the concrete steps and path from Alice Street at the base. Summit Loop is a short walk around the top to the summit. Mt Marlay has mixed Eucalypt habitat providing good views of a diverse range of birds. *Common Bronzewing, Wedge-tailed Eagle, Whistling Kite, Sacred Kingfisher*, Australian Hobby, Crimson Rosella, White-throated Treecreeper, Red Wattlebird, Spotted Pardalote, Yellow Thornbill, Brown Thornbill, Buff-rumped Thornbill, Australian Golden Whistler, Grey Fantail*, Eastern Yellow Robin, Rose Robin*.*

27. Sentimental Rocks

End of Jardine Street, Stanthorpe -28.664832, 151.925151

A mini-Girraween, this is a wonderful patch of granite boulders located in Stanthorpe. Not well signposted, a track leads off at the end of Jardine street (the GPS point) up into the bush area. Birding can be excellent and it is perfect if you don't have time to get out to Girraween National Park. *Oriental Dollarbird*, Nankeen Kestrel, Little Corella, Crimson Rosella, Eastern Rosella, White-throated Treecreeper, Spotted Pardalote, Speckled Warbler, White-browed Scrubwren, Striated Thornbill, Western Gerygone, Rufous Whistler, Grey Fantail*, Eastern Yellow Robin, Golden-headed Cisticola, Silveryeye.*

Southwestern Area Sites

28. Sundown National Park – Nth Entrance

Not suitable for caravans, 4WD after entry to park, no phone coverage

Sundown Rd, Ballandean -28.829274, 151.745848

The northern entrance to Sundown National park is 11km along Sundown Rd from Ballandean. This rugged and remote Park is in the south-west of Southern Downs. This entrance is in high traprock country with steep ridges and gorges carved out by the numerous creeks running through the area. The best birding can be had by parking at the entrance and walking along the 4WD road into the park. *Stubble Quail, Wonga Pigeon, Bar-shouldered Dove, Little Bronze Cuckoo, Baillon's Crake, Little Eagle, Peregrine Falcon, Glossy Black Cockatoo, Oriental Dollarbird*, Turquoise Parrot, Satin Bowerbird, Red-browed Treecreeper, Brown Treecreeper, Variegated Fairywren, Spiny-cheeked Honeyeater, Fuscous Honeyeater, Scarlet Myzomela, Brown-headed Honeyeater, Striped Honeyeater, Spotted Pardalote, Speckled Warbler, Weebill, White-browed Babbler, Ground Cuckooshrike, White-winged Chough, Australian Raven, Red-capped Robin*, Hooded Robin, Singing Bush Lark, Rufous Songlark, Tawny Grassbird, Diamond Firetail, Plum-headed Finch.*

29. Sundown National Park – Main Entrance

Off Glenlyon Dam Rd. -28.919104, 151.577083

Located 80km from Stanthorpe taking the Texas Rd to Texas and 110km

Carr's Lookout also located on Spring Creek Rd, is 8 kms north-east of Queen Mary Falls. Stunning views over the start of the Condamine River and the Murray Darling Basin. Carr's Lookout is the final stage of the Falls Drive, which takes in the three sites above. Expansive Gondwana Rainforest views of Main Range National Park, Wilson's Peak and Mount Superbus. There is an easily accessible car park available next to the lookout. *Australian Brushturkey, Topknot Pigeon, Brown Cuckoo-Dove, Brown Falcon, Brown Goshawk, Nankeen Kestrel, Eastern Whipbird, White-throated Treecreeper, Striated Thornbill.*

CUNNINGHAM'S GAP AREA

18. Cunningham's Gap

Cunningham Highway -28.049591, 152.393338

The high point on the Road from Aratula to Warwick is Cunningham's Gap. At the carpark a network of trails spreads out into Main Range National Park. The best trails for bird watching are Mount Cordeaux Track, the end of the Scenic Rim Trail and Rainforest Circuit. This is sub-tropical rainforest with crystal clear creeks, escarpments and peaks and an incredible array of birdlife. *White-headed Pigeon, Brown Cuckoo-Dove, Wompoo Fruit Dove, Topknot Pigeon, Shining Bronze Cuckoo*, Pacific Baza, Grey Goshawk, Collared Sparrowhawk, Glossy Black Cockatoo, Noisy Pitta, Albert's Lyrebird, Green Catbird, Regent Bowerbird, Variegated Fairywren, Lewin's Honeyeater, Bell Miner, Yellow-throated Scrubwren, Large-billed Scrubwren, Australian Logrunner, Eastern Whipbird, Paradise Riflebird, Black-faced Monarch, Spectacled Monarch, Pale-yellow Robin, Bassian Thrush, Russet-tailed Thrush.*

19. Main Range National Park Picnic Area

Cunningham Highway -28.053904, 152.380205

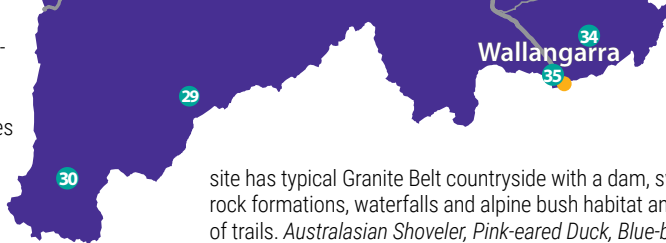
2.5km from Cunningham's Gap is Cunningham's Gap picnic area on the right of the road as you drive towards Warwick. The picnic ground itself is excellent for birdwatching as is the Box Forest Track that runs from here towards Cunningham's Gap. The track runs through sub-tropical rainforest and giant Brush Box trees along West Gap Creek. *Brown Cuckoo-Dove, Wonga Pigeon, Shining Bronze Cuckoo*, Grey Goshawk, Peaceful Dove, Greater Sooty Owl, Australian Masked Owl, Australian Boobook, Glossy Black Cockatoo, Noisy Pitta, Albert's Lyrebird, Green Catbird, Bell Miner, Yellow-throated Scrubwren, Large-billed Scrubwren, Australian Logrunner, Common Cicadabird, Paradise Riflebird, Black-faced Monarch, Bassian Thrush, Double-barred Finch.*

GOOMBURRA AREA

20. Main Range National Park - Goomburra

Lookout Rd, Goomburra -27.978228, 152.350646

50km from Warwick, Goomburra Area is entered from Forestry Reserve Rd. Once in the National Park, Lookout Rd traverses a series of picnic and camping areas. Highly recommended are Kurrajong Picnic Area and Manna Camping Area. The Cascades and Dalrymple Circuits start from Manna Camping Area and are the pick of the trails. This is subtropical rainforest with some more open forest and stands of Red Cedar, White Beech and Hoop Pine. Dalrymple Circuit is also good. *White-headed Pigeon, Wompoo Fruit Dove, Topknot Pigeon, Shining Bronze Cuckoo*, Pheasant Coucal, Greater Sooty Owl, Australian Masked Owl, Australian Boobook, Grey Goshawk, Noisy Pitta, Albert's Lyrebird, Green Catbird, Oriental Dollarbird*, Satin Bowerbird, Bell Miner, Australian King Parrot, Variegated Fairywren, White-throated Honeyeater, Yellow-faced Honeyeater, Spotted Pardalote, Australian Logrunner, Varied Triller, Olive-backed Oriole, Paradise Riflebird, Spectacled Monarch, Russet-tailed Thrush.*



site has typical Granite Belt countryside with a dam, swamps, spectacular rock formations, waterfalls and alpine bush habitat and an extensive network of trails. *Australasian Shoveler, Pink-eared Duck, Blue-billed Duck, Musk Duck, Yellow-billed Spoonbill, Hoary-headed Grebe, Great Crested Grebe, Wonga Pigeon, Buff-banded Rail, Baillon's Crane, Latham's Snipe*, Black-shouldered Kite, Pacific Baza, Australian Boobook, Azure Kingfisher, Sacred Kingfisher*, Rainbow Bee-eater*, Brown Treecreeper, Spiny-cheeked Honeyeater, White-plumed Honeyeater, Large-billed Scrubwren, White-throated Gerygone, Striated Thornbill, Grey-crowned Babbler, White-bellied Cuckooshrike, Little Grassbird, Tawny Grassbird, Mistletoebird, Plum-headed Finch, Chestnut-breasted Mannikin, Australian Pipit.*

Stanthorpe Area Sites

23. Broadwater State Forest

Glenlyon Drive, Stanthorpe -28.630817, 151.913175

North-west of Stanthorpe, is Broadwater State Forest. A large area of granite outcrops with scattered mixed eucalyptus forest. It has an extensive network of bush walking and mountain biking trails providing easy access to excellent birdwatching habitat. The elevation is mostly above 900m and the area is hilly. Parking is on Glenlyon Drive, a quiet road that leads into the forest. The GPS marker is the start of the Happy Snappy Mountain Bike trail. *Fan-tailed Cuckoo*, Black-shouldered Kite, Wedge-tailed Eagle, Forest Kingfisher, Sacred Kingfisher*, Oriental Dollarbird*, Red-rumped Parrot, Musk Lorikeet, Red-winged Parrot*, Crimson Rosella, White-throated Treecreeper, Purple-backed Fairywren, Eastern Spinebill, Yellow-faced Honeyeater, Yellow-tufted Honeyeater, Red Watlebird, White-eared Honeyeater, White-naped Honeyeater, Striped Honeyeater, White-browed Scrubwren, Australian Golden Whistler, Grey Shrikethrush, Grey Fantail*, Eastern Yellow Robin, Spangled Drongo, Red-browed Finch.*

24. The Red Bridge and Sean's Path

Cnr Rose and Anzac Streets -28.662671, 151.93858

Stanthorpe's historic Red Bridge (1880s) crosses Quart Pot Creek at the end of Sean's Path. Sean's Path can be accessed from the carpark at the corner of Rose and Anzac Streets. The trail leads along the creek to the bridge where a low-level boardwalk crosses the creek. The habitat is dense riparian vegetation and has a good variety of bush birds. *Hardhead, Australasian Grebe, Bar-shouldered Dove, Fan-tailed Cuckoo*, White-faced Heron, Brown Goshawk, Azure Kingfisher, Crimson Rosella, Satin Bowerbird, White-throated Treecreeper, Purple-backed Fairywren, Variegated Fairywren, Yellow-tufted Honeyeater, White-plumed Honeyeater, Brown-headed Honeyeater, Spotted Pardalote, White-browed Scrubwren, White-throated Gerygone, White-winged Triller, Common Cicadabird*, Varied Sittella, Australian Golden Whistler, Rufous Whistler, Olive-backed Oriole, Grey Fantail*, Leaden Flycatcher*, Restless Flycatcher*, Rose Robin*.*

25. Quart Pot Creek Parklands Trail

All the way through Stanthorpe -28.661809, 151.933846

Parklands Trail is a 5km trail that follows Quart Pot Creek from the Red Bridge right through Stanthorpe. It is dotted with numerous picnic spots and playgrounds and can be accessed from various points. The creek sides are flanked with parks and dotted with eucalypts. The creek itself has small patches of

water. The best trails for birdwatching are Permanents Waterhole Track and the Western Circuit. The countryside here is very remote and you could easily spend several days exploring. Permanents Waterhole Track follows Ooline Creek whereas the Western Circuit explores the higher country. *Brown Quail, Painted Buttonquail, Shining Bronze Cuckoo*, Little Bronze Cuckoo, White-throated Nightjar, Australian Owlet-nightjar, Nankeen Night Heron, Brown Falcon, Turquoise Parrot, Spotted Bowerbird, Brown Treecreeper, Purple-backed Fairywren, Scarlet Myzomela, Brown-headed Honeyeater, Fuscous Honeyeater, Striped Honeyeater, Inland Thornbill, White-browed Babbler, White-bellied Cuckooshrike, Eastern Shrike, White-breasted Woodswallow, Red-capped Robin*, Hooded Robin, Brown Songlark, White-backed Swallow, Diamond Firetail.*

30. Glenlyon Dam

End of Glenlyon Dam Rd -28.977165, 151.467761

West of Sundown National Park is Glenlyon Dam. There is a lookout, day-use facilities and at the Dam is the Glenlyon Dam Tourist park, which welcomes day visitors. The lookout, Rds and park up to and around the Dam provide good birdwatching opportunities. The habitat is open dry eucalypt forest. Plenty of waterbirds are attracted to the Dam. *Black Swan, Hardhead, Great Crested Grebe, Pied Stilt, Black-fronted Dotterel, Silver Gull, Caspian Tern, Australian Pelican, Australian White Ibis, Yellow-billed Spoonbill, Osprey, White-bellied Sea Eagle, Azure Kingfisher, Spiny-cheeked Honeyeater, Striped Honeyeater, Weebill, Brown Gerygone, White-winged Chough, Rufous Songlark, Double-barred Finch, Australian Zebra Finch.*

Southeastern Area Sites

31. Storm King Dam

Eukey Rd, Stanthorpe -28.717059, 151.991278

A public park on the western shore of Storm King Dam. Access is from Eukey Rd. A second location is where Pyramids Rd crosses the southern end of the dam. Here there is a small carpark on the left before crossing the bridge (-28.734292, 151.989757). Both sites allow access for birdwatching along the edges of the dam and in the adjacent open eucalypt forest habitat. *Hardhead, Great Crested Grebe, Yellow-billed Spoonbill, Australasian Swamphen, Australasian Darter, Plumed Egret, Australian White Ibis, Glossy Ibis, Little Eagle, Whistling Kite, Oriental Dollarbird*, Nankeen Kestrel, Little Corella, Crimson Rosella, White-plumed Honeyeater, White-throated Honeyeater, Spotted Pardalote, White-browed Scrubwren, Grey-crowned Babbler, Jacky Winter, Fairy Martin, Tree Martin, Red-browed Finch.*

32. Girraween National Park - Visitor Centre

Pyramids Rd, Wyberba -28.83303, 151.936126

This park with massive granite outcrops, balancing rocks and spectacular spring flowering is an incredible place to see birds. From the visitor centre

Legend

	Tables		Wheelchair accessible toilets
	Cyclists		Barbecues
	Access for mobility impaired#		Telescope recommended
	Track maps		Shelter
	Off street parking*		Toilets
			Drinking water

*Off-Rd parking may include a designated car parking area or the availability of off Rdside verge parking. Care should be taken when parking on verges adjacent to busy Rds. #Mobility access is described on the back page.